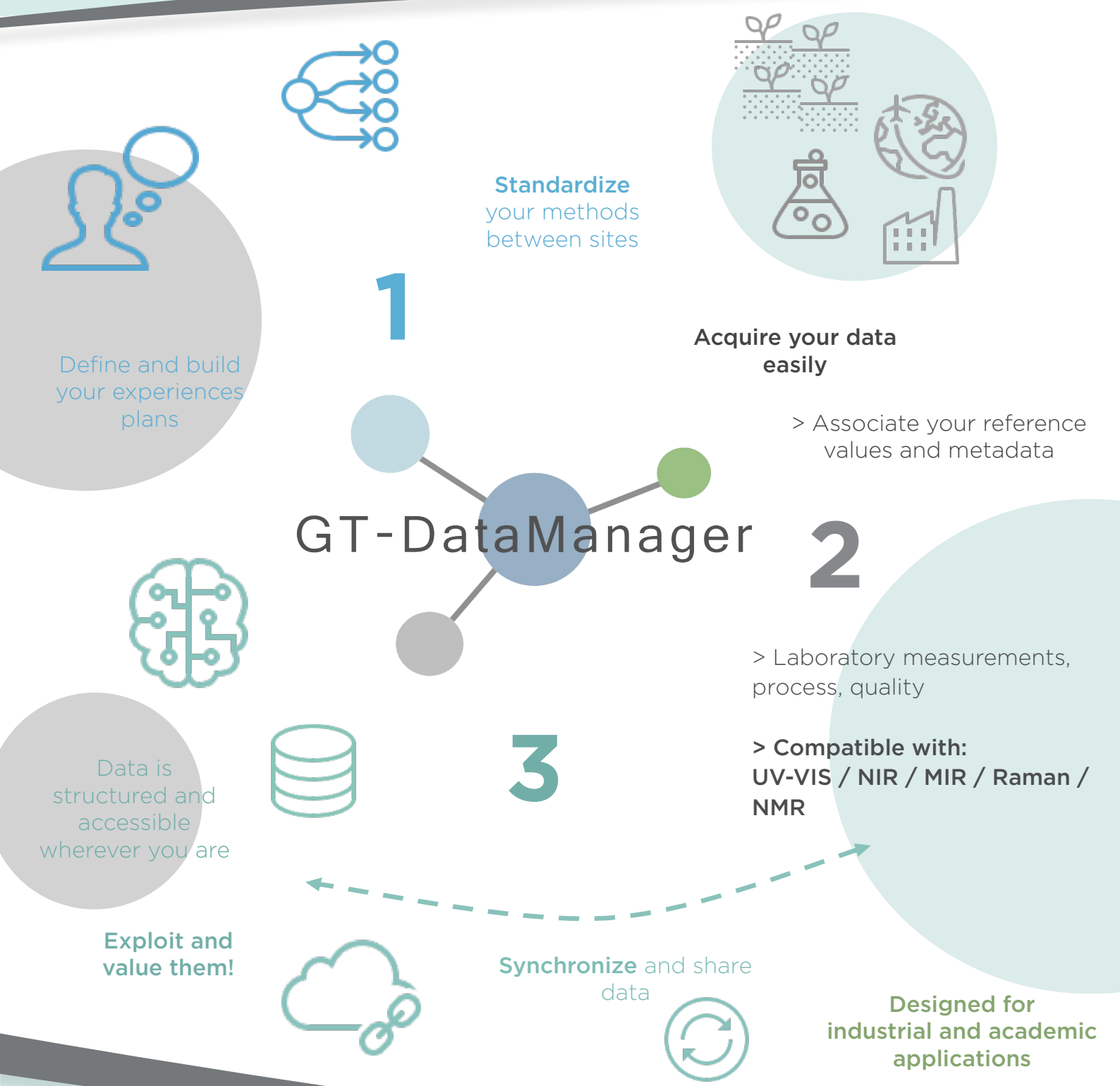


# Collaborative tool to create and share your spectral databases



- > Standardize your methods and share with your colleagues
- > Harmonize and gather your data
- > Import your databases existing
- > Add and create metadata interest
- > Compatible with any type of data (UV-VIS, NIR, MIR, Raman, NMR ...)

The screenshot shows the GT-DataManager interface. It features a sidebar with navigation options like 'Sign In', 'Experience Plan', 'Synchronisation', 'Database', and 'FTP'. The main area displays a project overview for 'Project DEMO' and 'Experience plan (Poc1 Normalization TIS)'. It contains two main tables: 'SAMPLES' and 'MEASUREMENTS'.

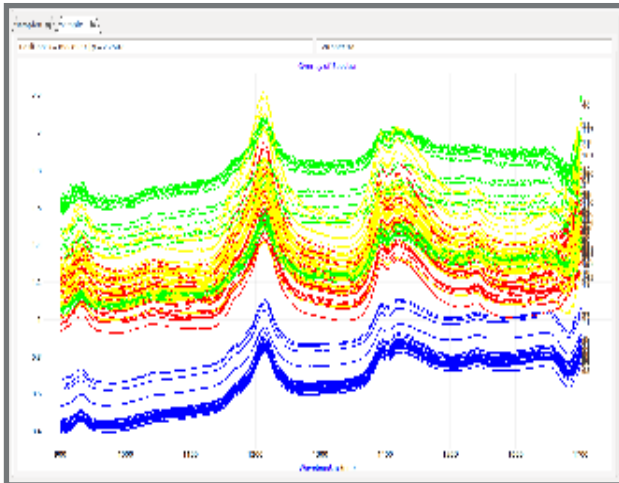
sample_nomenclature	sample_description	sample_details	sample_photoFile
1 PLASTIC_HDPE_001	DEMO HDPE1		Load View
2 PLASTIC_HDPE_005	DEMO HDPE4		Load View
3 PLASTIC_HDPE_008	DEMO HDPE7		Load View
4 PLASTIC_LDPE_001	DEMO LDPE1		Load View
5 PLASTIC_LDPE_018	DEMO LDPE18		Load View
6			Load View
7 PLASTIC_PPH_001	DEMO PPH1		Load View
8 PLASTIC_PPH_002	DEMO PPH1p		Load View

sample_date	file_nomenclature	number of spectra	number of pictures	measurement_device	measurement
03/14/2018	TIS_DEMO_PLASTIC_HDPE_001	30 spectra (30 files)	0 picture	TI #5	DLPNTL_Ref_006
03/14/2018	TIS_DEMO_PLASTIC_HDPE_005	30 spectra (30 files)	0 picture	TI #5	DLPNTL_Ref_006
03/14/2018	TIS_DEMO_PLASTIC_HDPE_008	30 spectra (30 files)	0 picture	TI #5	DLPNTL_Ref_006
03/14/2018	TIS_DEMO_PLASTIC_LDPE_001	30 spectra (30 files)	0 picture	TI #5	DLPNTL_Ref_006
03/14/2018	TIS_DEMO_PLASTIC_LDPE_018	30 spectra (30 files)	0 picture	TI #5	DLPNTL_Ref_006
6					
03/14/2018	TIS_DEMO_PLASTIC_PPH_001	29 spectra (29 files)	0 picture	TI #5	DLPNTL_Ref_006
03/14/2018	TIS_DEMO_PLASTIC_PPH_002	30 spectra (30 files)	0 picture	TI #5	DLPNTL_Ref_006

## Check in real time the quality of your measurements

- > Control the spectra
- > Overlay, smooth, average your spectra
- > Correct baselines
- > Export as .pdf .jpeg .png .csv



## Information is shared between actors for a smooth experience

- > Access the database via a web portal
- > Export as non-proprietary .xls or .csv
- > Store locally, on the cloud or your infrastructures

### Characteristics

- Software: Windows 7 or 10
- Hardware:
  - > 4 GB of memory (RAM)
  - > 500 MB of disk space
- Screen resolution: 1400x1010 min (4: 3)
- Processor: Intel Core i5
- Operating system type: 64-bit

FOLLOW US !



www.greentropism.com

GreenTropism

10-12 rue de l'Amiral Hamelin  
75116 Paris, France

info@greentropism.com